

Unveiling the Ghoulish Charm of Frankenstein 1973 and 1975: Jessie Ash's Horrific Masterpieces

Delving into the Syncretic Vision of a Female Horror Icon



In the annals of cinematic history, Jessie Ash stands as a formidable figure. Her haunting performances in the Hammer Horror productions of *Frankenstein and the Monster from Hell* (1973) and *Frankenstein and the Monster That Defies Death* (1975) have left an enduring mark on the horror genre. Ash's interpretation of the iconic monster transcended the mere portrayal of a grotesque figure; she infused her character with a profound sense of pathos and humanity, blurring the lines between monster and man.



Frankenstein (1973-1975) #5 by Jessie Ash

★★★★★ 5 out of 5

Language : English

File size : 87193 KB

Print length : 20 pages

Screen Reader : Supported



The Genesis of a Monstrous Icon

Jessie Ash's foray into the world of horror began in the 1950s with appearances in several British television series. It was her breakthrough role as the tormented Margareta in Terence Fisher's *The Curse of Frankenstein* (1957) that garnered critical acclaim and paved the way for her subsequent horror outings.



Ash's interpretation of Frankenstein's monster was a departure from the traditional portrayal of a mindless, rampaging creature. Instead, she imbued her performance with a depth of emotion, conveying the monster's inner turmoil and yearning for acceptance. Her portrayal resonated with audiences, capturing the complex nature of the character and adding layers of nuance to the archetypal monster figure.

Frankenstein and the Monster from Hell: A Symphony of Horror and Redemption

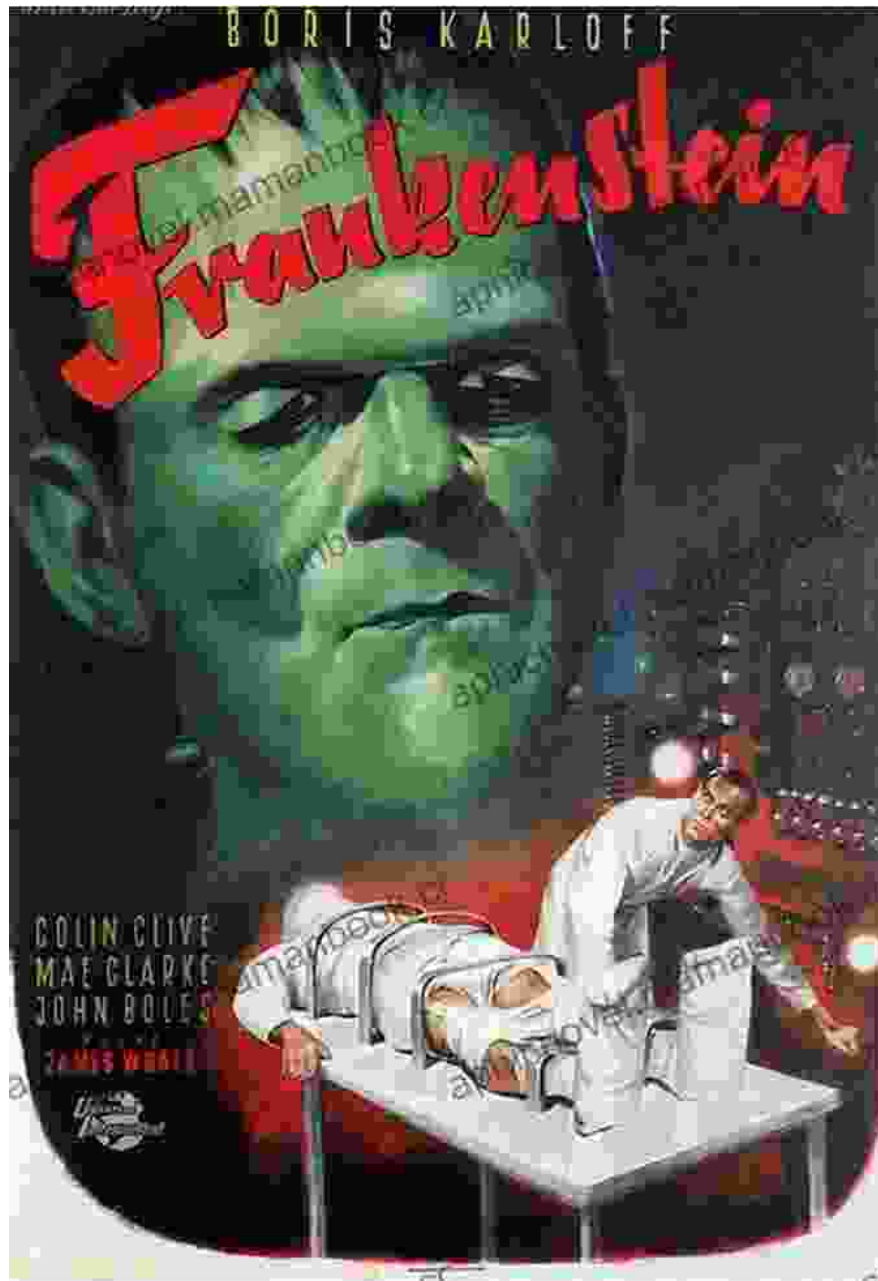
In *Frankenstein and the Monster from Hell*, Ash's monster is a tragic figure, haunted by his past and seeking a semblance of redemption. The film delves into the psychological motivations of the creature, exploring themes of alienation, identity, and the consequences of scientific hubris.



Ash's performance is both physically and emotionally demanding. She undergoes a series of gruesome transformations, her body contorting and her voice echoing with anguish. Yet, beneath the grotesque facade, Ash conveys the monster's desperate struggle for acceptance and his longing for a connection that eludes him. The film's poignant exploration of the monster's humanity culminates in a heartbreaking and thought-provoking .

Frankenstein and the Monster That Defies Death: A Triumph of Unbridled Horror

Frankenstein and the Monster That Defies Death finds Ash's monster in a state of decay, his body ravaged by years of abuse and experimentation. The film takes on a more overtly horrific tone, amplifying the gruesome elements and delving into the darker recesses of the monster's psyche.



Ash's performance in this film is unhinged and terrifying. She transforms her body into a grotesque spectacle, her eyes burning with an otherworldly intensity. Her portrayal captures the raw, primal instincts of the creature, stripped of all humanity and driven by an insatiable thirst for revenge. The film culminates in a bloody and nihilistic climax, leaving audiences both horrified and exhilarated.

Jessie Ash's Legacy: A Horror Icon Reclaimed

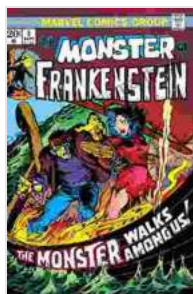
Jessie Ash's contributions to the horror genre have been undeniable. Her performances as Frankenstein's monster defied expectations and challenged the traditional portrayal of monsters as mere objects of fear. She brought a depth of emotion and humanity to the role, blurring the lines between the monstrous and the human.



In recent years, there has been a renewed appreciation for Ash's work. Feminist scholars and horror enthusiasts alike have recognized her as a pioneer in the genre, breaking down barriers and paving the way for future

female horror icons. Her performances have inspired countless actors and filmmakers, cementing her status as a true legend of horror cinema.

Jessie Ash's portrayal of Frankenstein's monster in *Frankenstein and the Monster from Hell* and *Frankenstein and the Monster That Defies Death* remains a testament to her exceptional talent and enduring impact. Her ability to transcend the physicality of the monster and capture its emotional complexities has left an indelible mark on the horror genre. As audiences continue to rediscover Ash's work, her legacy as a horror icon and a pioneer for female representation will undoubtedly endure for generations to come.



Frankenstein (1973-1975) #5 by Jessie Ash

★★★★★ 5 out of 5

Language : English

File size : 87193 KB

Print length : 20 pages

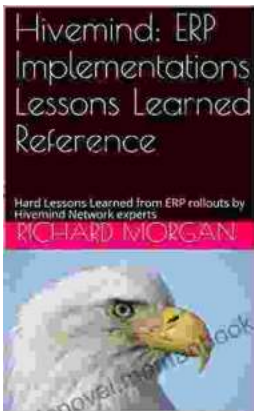
Screen Reader : Supported





World of Dead Volume Issue: An In-Depth Analysis

The World of Dead volume issue refers to a specific problem that has plagued users of the popular music player app since its release in 2017. The issue manifests...



Hard Lessons Learned from ERP Rollouts: A Hivemind Network Experts' Perspective

Enterprise Resource Planning (ERP) systems are pivotal in streamlining business operations, enhancing productivity, and gaining a competitive edge....